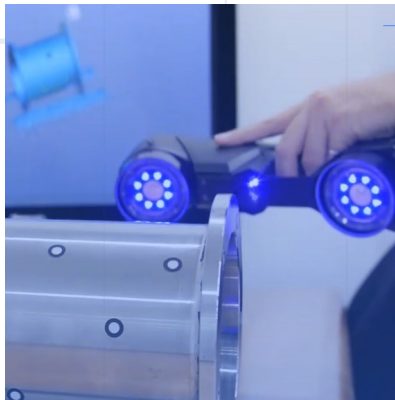


## WHAT IS 3D SCAN?

3D SCAN IS THE PROCESS BY WHICH A REAL-WORLD **OBJECT IS MEASURED, RECORDED AND DIGITIZED VIRTUALLY**. MANY TYPES OF 3D SCANNERS ARE USE TO **GET A 3D MESH OR SURFACE** IN THE VIRTUAL WORLD. THE GOAL IS TO **CAPTURE THE 3D GEOMETRY AND SHAPE OF A PART** NO MATTER THE COMPLEXITY OR SURFACE TYPE.

## CHALLENGING SITUATIONS

A prime example of challenging situations in the nuclear or petrochemical field is the need to measure quickly and accurately parts, assembly or any type of object. Whether it's for Quality Control (QC) or simply to get the geometry of the object, **3D scan reduces inspection time and improves the efficiency of every step of the PLM** (Product Life Cycle Management).



## 3D SOLUTIONS

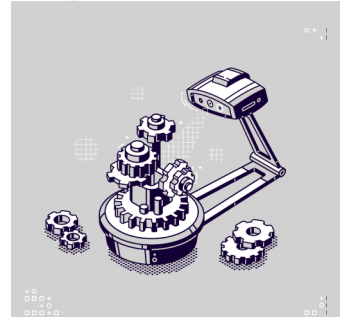
3D scan uses **handheld device, long range** type of scanner and even **drone with photogrammetry** technology. 3D scan data combined with different post-treatment softwares allows Nucleom to perform **custom analysis, inspections** or processing to solve any issue.

**3D scan data combined with NDT solutions** offers a complete assessment. These solutions are proven for **material loss**, such a corrosion, or even **mechanical damage analysis**. Scan-to-CAD or Mesh-to-Mesh **comparative analysis** can also be conducted in addition to **computer assisted design using the 3D scan data** as a model to **create 2D layout or 3D CAD model**.

The scope of 3D solutions is wide, it goes from first article inspection to machinery retrofitting/reverse engineering passing by custom part inspection and 3D printing.

## ABOUT US

Nucleom is a Canadian owned and based company offering a wide range of non-destructive testing (NDT) services. Nucleom is called upon for projects requiring the adaptation of traditional NDT. Inspections are completed through techniques and strategies to present a high quality and detailed analysis that will answer the needs of our clients across a broad range of industries.



In addition to its impressive expertise, Nucleom is now offering complete **3D scan and metrology services** :

- + 3D scan service;
- + 3D Reverse engineering/retrofitting solution;
- + 3D Printing (rapid prototyping);
- + 3D inspection, quality control;
- + Metrology services/First Article Inspection;
- + Custom inspection/Integrated 3D Scan inspection solutions.

